

About the Battery:

In Some Air delivery, the product with battery is prohibited. But there is battery in our controller DDCCS-Expert, that is for working time calculation and date keeping, very important function, for most cases, we need it very much.

For the customers no need the battery inside the controller because of the delivery reason, here we introduce how to take off the battery and install it in. So when delivery by Air, you can take off it and when you need you still can install it.

1) Take off the back cover of the controller, here we can see the PCB picture like this:

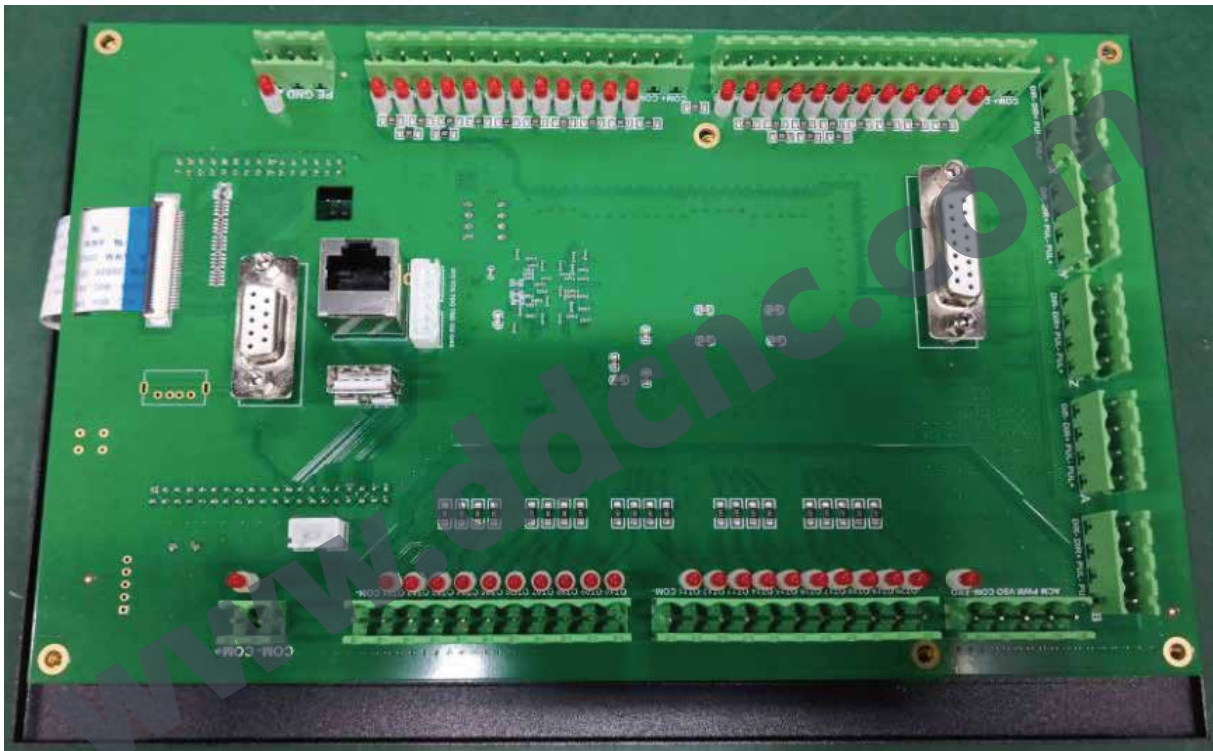


Figure 9-1 Back Side of the Controller PCB

2) Open the PCB Board:

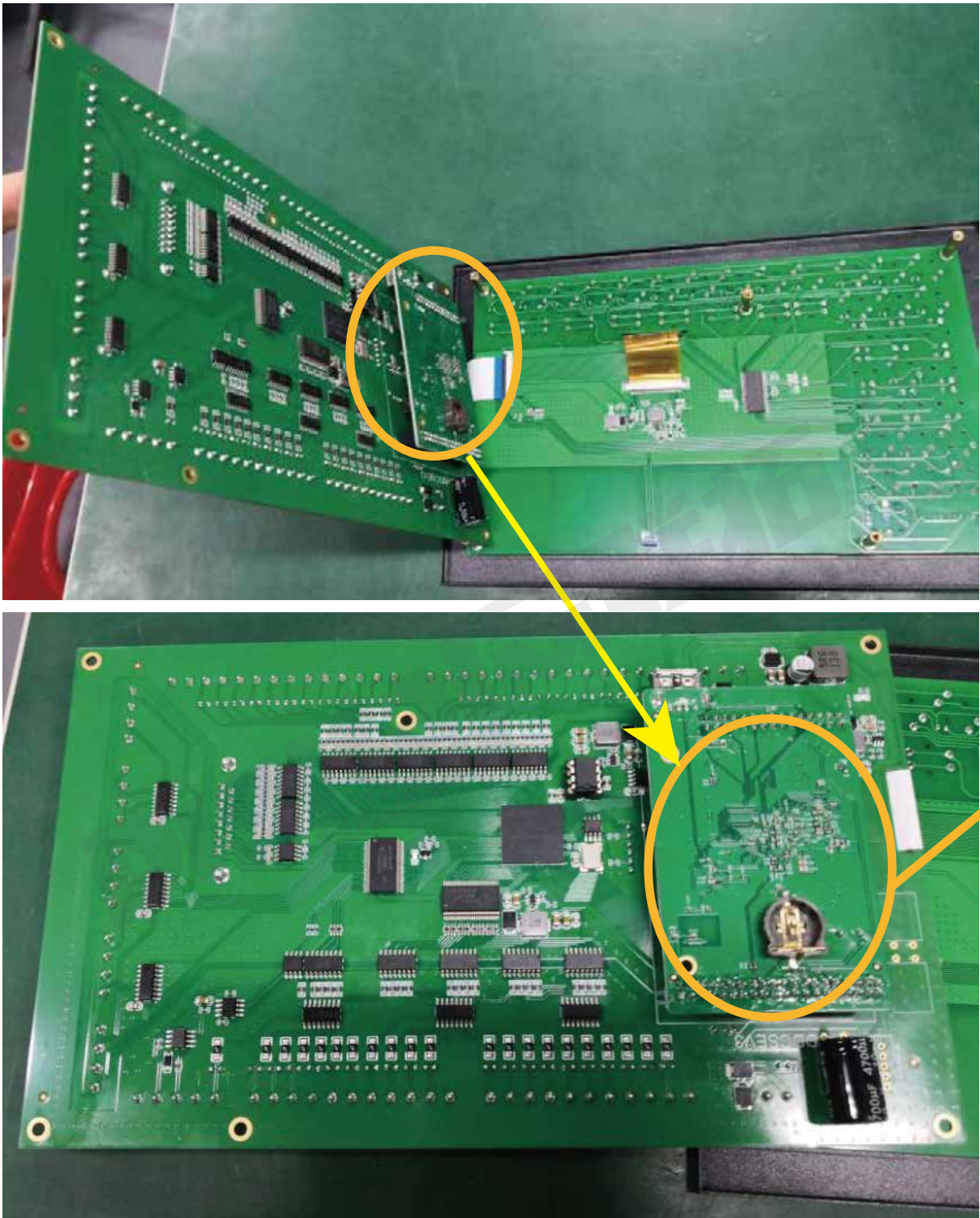


Figure 9-2 Battery Location



Figure 9-3 Battery holder

3) Now we go to any local shop to buy the battery “CR1220”, here this picture is the battery we installed in our factory:



Figure 9-4 CR1220 Battery

4) We install the CR1220 to the holder carefully:



Figure 9-5 CR1220 Battery installed in DDCS-Expert

Now the installation is finished.

Digital Dream
DREAM